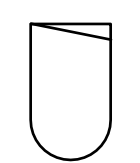


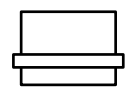
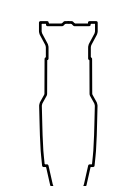
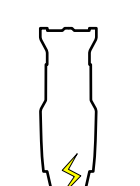
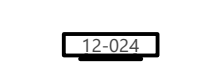
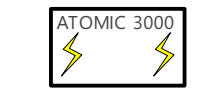
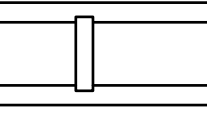


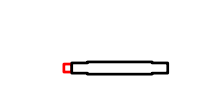
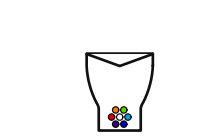
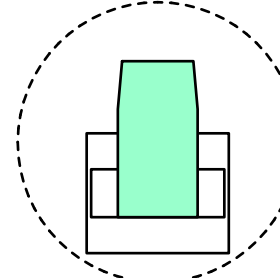
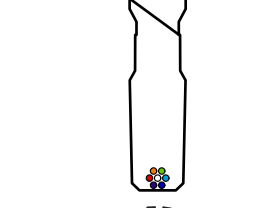
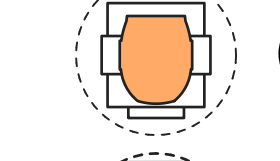
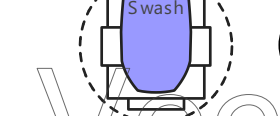
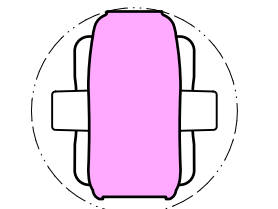
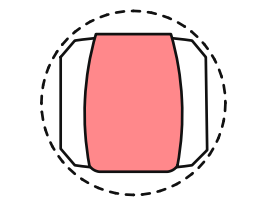
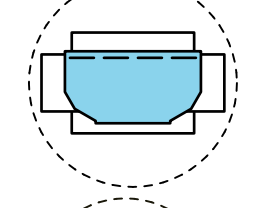
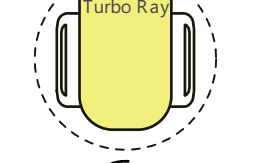



-  Altman PAR 64 NSP (1kw)
-  Altman Q-Lite (1kw)
-  Altman Q-Lite Jr (650W)
-  L&E Broad Cyc
-  ETC Source 4 36° (750W)
-  ETC Source 4 36° w/ Strobe Cap

-  Wybron Forerunner 7" Scroller
-  Martin Atomic 3000 DMX
-  Martin Roboscan Pro 918
-  Color Kinetics C-200
-  Color Kinetics Colorblast 12 Med. Lens
-  Color Kinetics iColor Cove MX Powercore
-  ETC D40 Lustr SELL40 Wide Round Lens

**INSTRUMENT KEY**

-  Varilite VL-2500 Spot
-  ETC Source 4 LED 26°
-  Clay Paky Sharpy
-  Clay Paky Sharpy Wash 330

-  Varilite VL-3500 Q Spot
-  Varilite VLX Wash
-  High End Systems ShapeShifter C1
-  High End TurboRay
-  GLP impression FR1


THIS DRAWING REPRESENTS VISUAL CONCEPTS AND CONSTRUCTION SUGGESTIONS ONLY. IT DOES NOT REPLACE THE KNOWLEDGE AND ADVICE OF A LICENSED STRUCTURAL ENGINEER. THE DESIGNER IS UNQUALIFIED TO DETERMINE THE STRUCTURAL INTEGRITY OF THIS DESIGN AND DOES NOT ASSUME ANY RESPONSIBILITY FOR IMPROPER ENGINEERING OR USAGE.

**HIDDEN LINE ISOMETRIC VIEW**

**TYPICAL**  
 R132 ← Color  
 1 ← Unit #  
 1 ← Channel

PLOT CONCEIVED BY CONCERT LIGHTING CLASS 2022

DRAWN BY: Jessica Winward

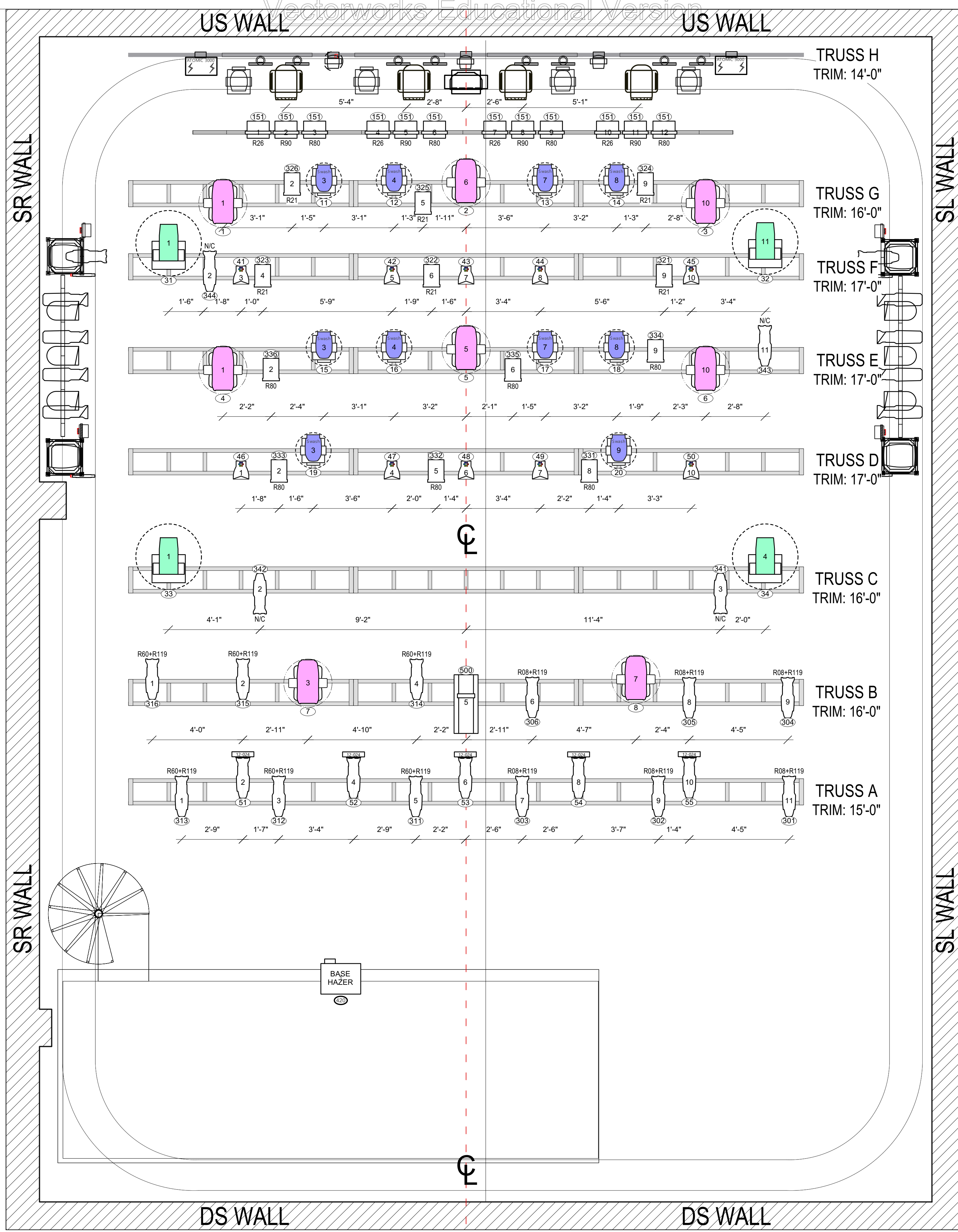


**WELLS CONCERT PLOT 2023-2024**

DATE: 11.11.2022  
 REVISION: 11.23.2022  
 12.04.2022

SCALE: 1/2" = 1'  
 PAPER SIZE: ARCH D

PLATE NO. 1 OF 5

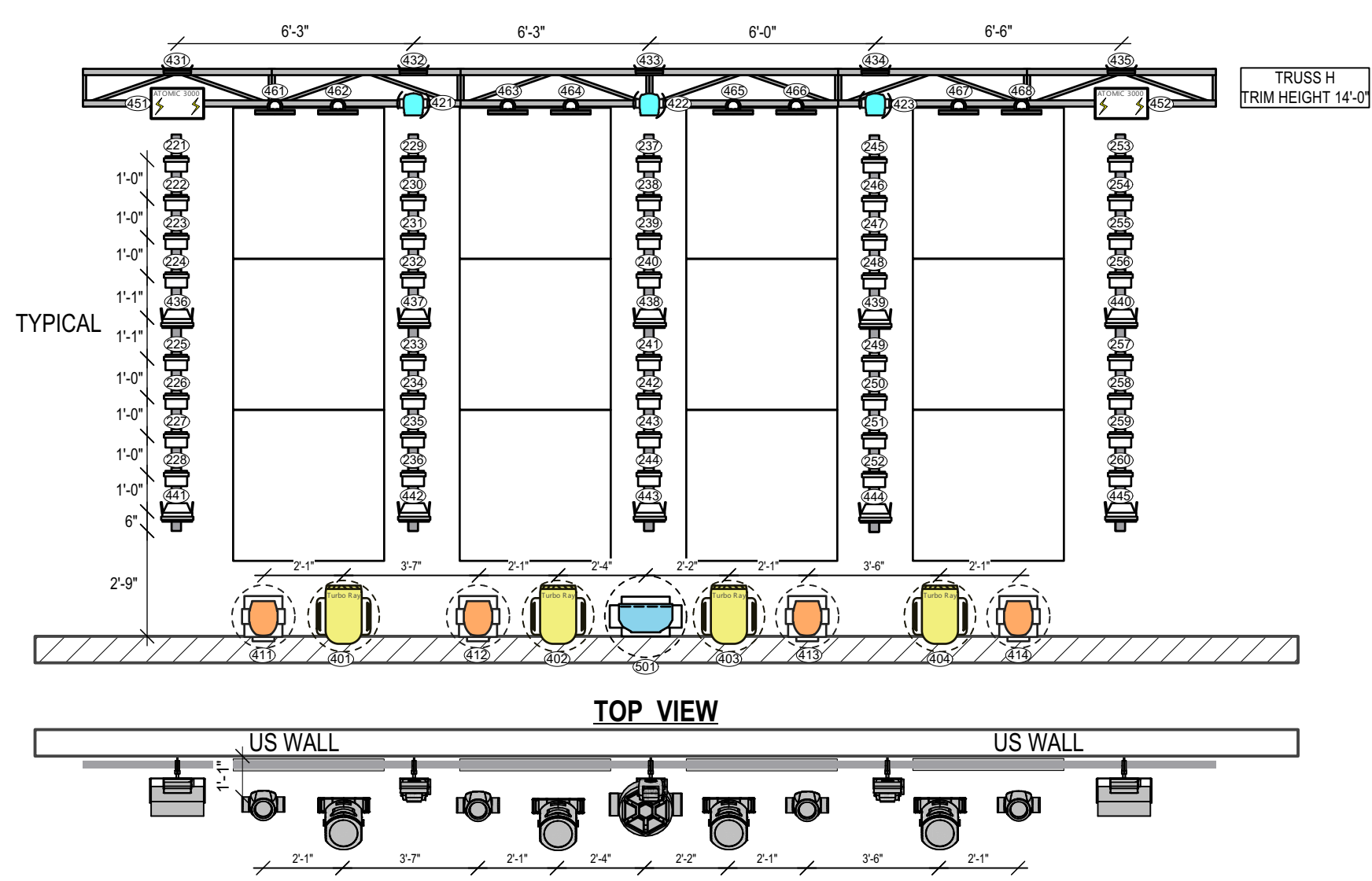


**OVERSTAGE & UPSTAGE**

Scale: 3/8" = 1'

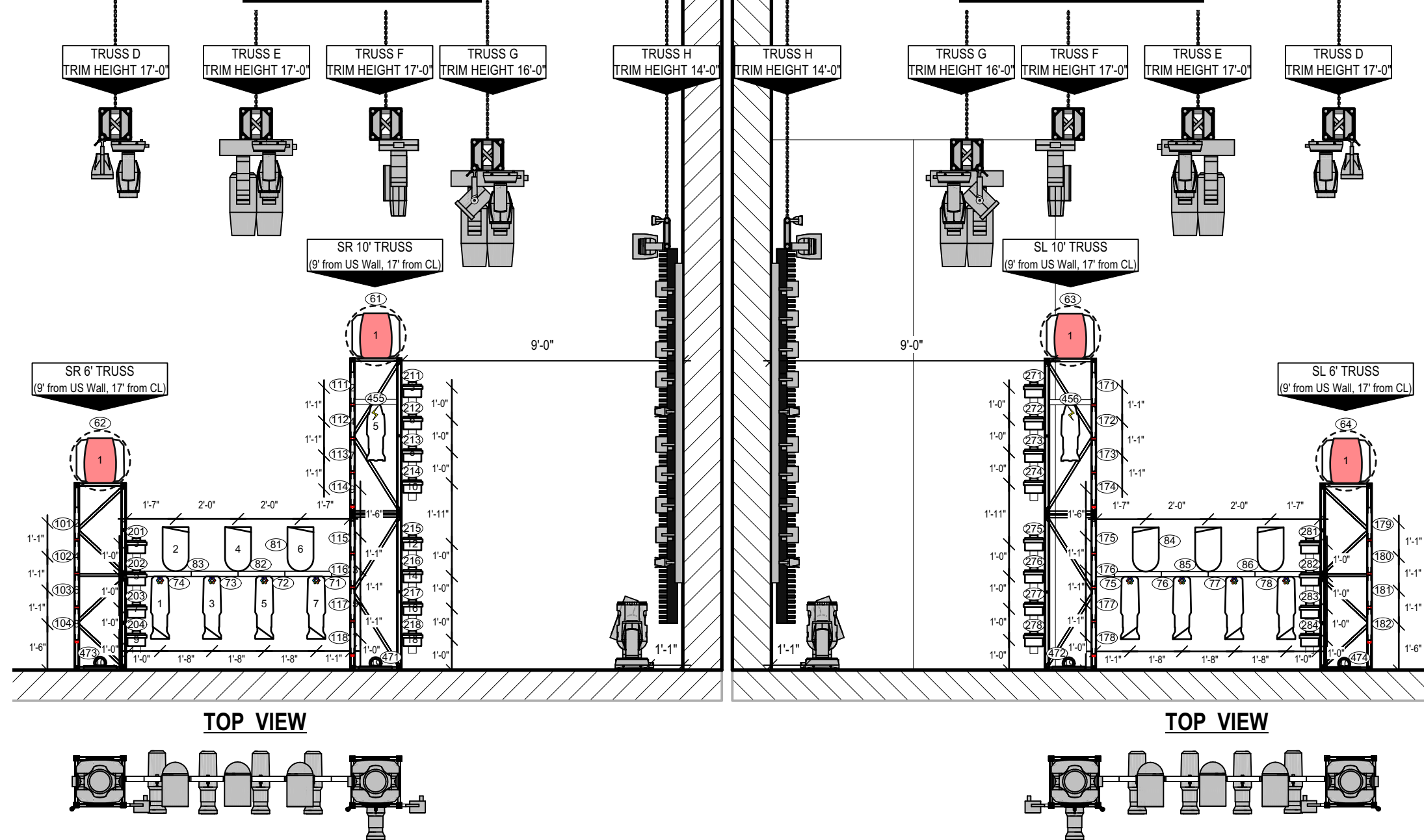
**US WALL**

Scale: 1/4" = 1'



**SL DECK**

Scale: 1/4" = 1'



**INSTRUMENT KEY**

- Altman PAR 64 NSP (1kw)
- Altman Q-Lite (1kw)
- Altman Q-Lite Jr (650W)
- L&E Broad Cyc
- ETC Source 4 36° (750W)
- ETC Source 4 36° w/ Strobe Cap
- Wybron Forerunner 7" Scroller
- Martin Atomic 3000 DMX
- Martin Roboscan Pro 918

- Color Kinetics Colorblast 12 Med. Lens
- Color Kinetics iColor Cove MX Powercore
- ETC D40 Lustr SELL40 Wide Round Lens
- ETC Source 4 LED 26°
- Clay Paky Sharpy
- Clay Paky Sharpy Wash 330
- High End Systems ShapeShifter C1

- Color Kinetics C-200
- Varilite VL-2500 Spot
- Varilite VL-3500 Q Spot
- Varilite VLX Wash
- GLP impression FR1
- High End TurboRay

THIS DRAWING REPRESENTS VISUAL CONCEPTS AND CONSTRUCTION SUGGESTIONS ONLY. IT DOES NOT REPLACE THE KNOWLEDGE AND ADVICE OF A LICENSED STRUCTURAL ENGINEER. THE DESIGNER IS UNQUALIFIED TO DETERMINE THE STRUCTURAL INTEGRITY OF THIS DESIGN AND DOES NOT ASSUME ANY RESPONSIBILITY FOR IMPROPER ENGINEERING OR USAGE.

**COMPOSITE**

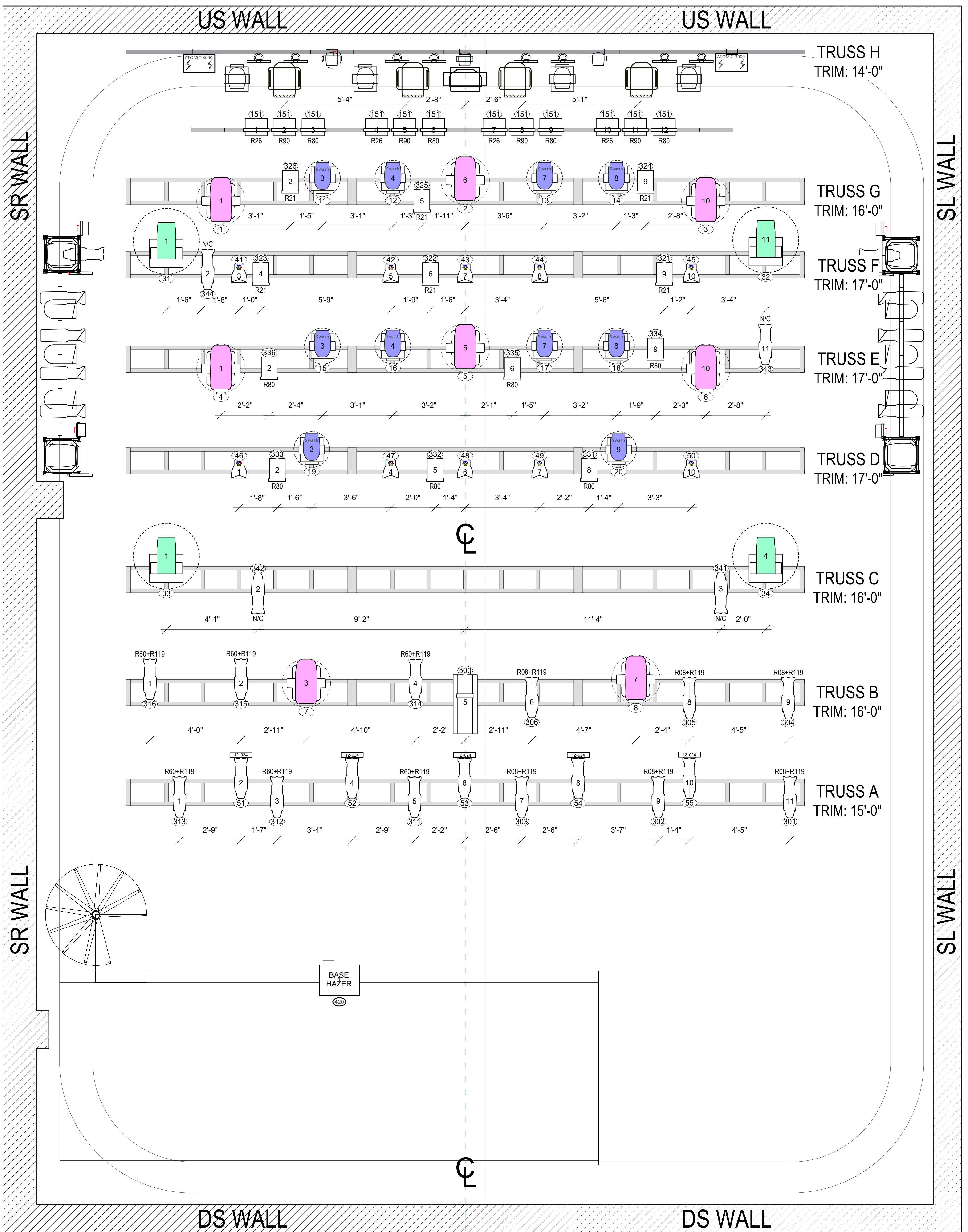


**TYPICAL**

- Color
- Unit #
- Channel

DATE: 11.11.2022  
 REVISION: 11.23.2022  
 12.04.2022  
 DRAWN BY: Jessica Winward  
 SCALE: MIXED  
 PAPER SIZE: ARCH D  
 PLATE NO.

2



- Altman PAR 64 NSP (1kw)
- Altman Q-Lite (1kw)
- Altman Q-Lite Jr (650W)
- L&E Broad Cyc
- ETC Source 4 36° (750W)
- ETC Source 4 36° w/ Strobe Cap
- Wybron Forerunner 7" Scroller
- Martin Atomic 3000 DMX
- Martin Roboscan Pro 918

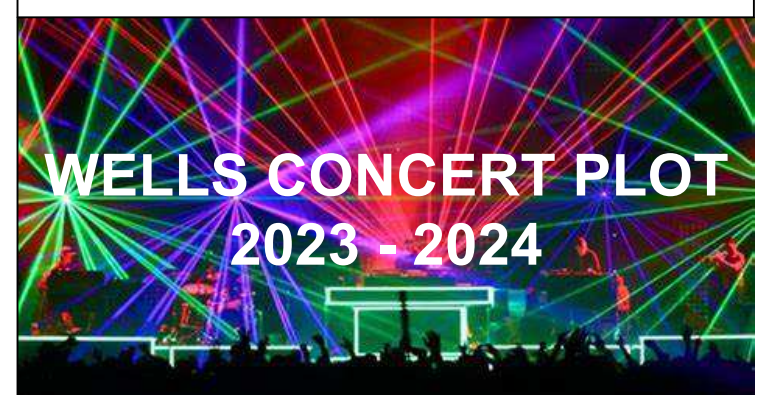
**INSTRUMENT KEY**

- Color Kinetics Colorblast 12 Med. Lens
- Color Kinetics iColor Cove MX Powercore
- ETC D40 Lustr SELL40 Wide Round Lens
- ETC Source 4 LED 26°
- Clay Paky Sharpy
- Clay Paky Sharpy Wash 330
- High End Systems ShapeShifter C1

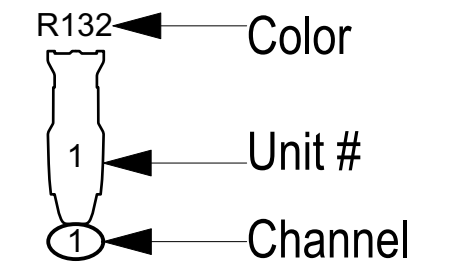
- Color Kinetics C-200
- Varilite VL-2500 Spot
- Varilite VL-3500 Q Spot
- Varilite VLX Wash
- GLP impression FR1
- High End TurboRay

THIS DRAWING REPRESENTS VISUAL CONCEPTS AND CONSTRUCTION SUGGESTIONS ONLY. IT DOES NOT REPLACE THE KNOWLEDGE AND ADVICE OF A LICENSED STRUCTURAL ENGINEER. THE DESIGNER IS UNQUALIFIED TO DETERMINE THE STRUCTURAL INTEGRITY OF THIS DESIGN AND DOES NOT ASSUME ANY RESPONSIBILITY FOR IMPROPER ENGINEERING OR USAGE.

**OVERHEAD & UPSTAGE**



**TYPICAL**

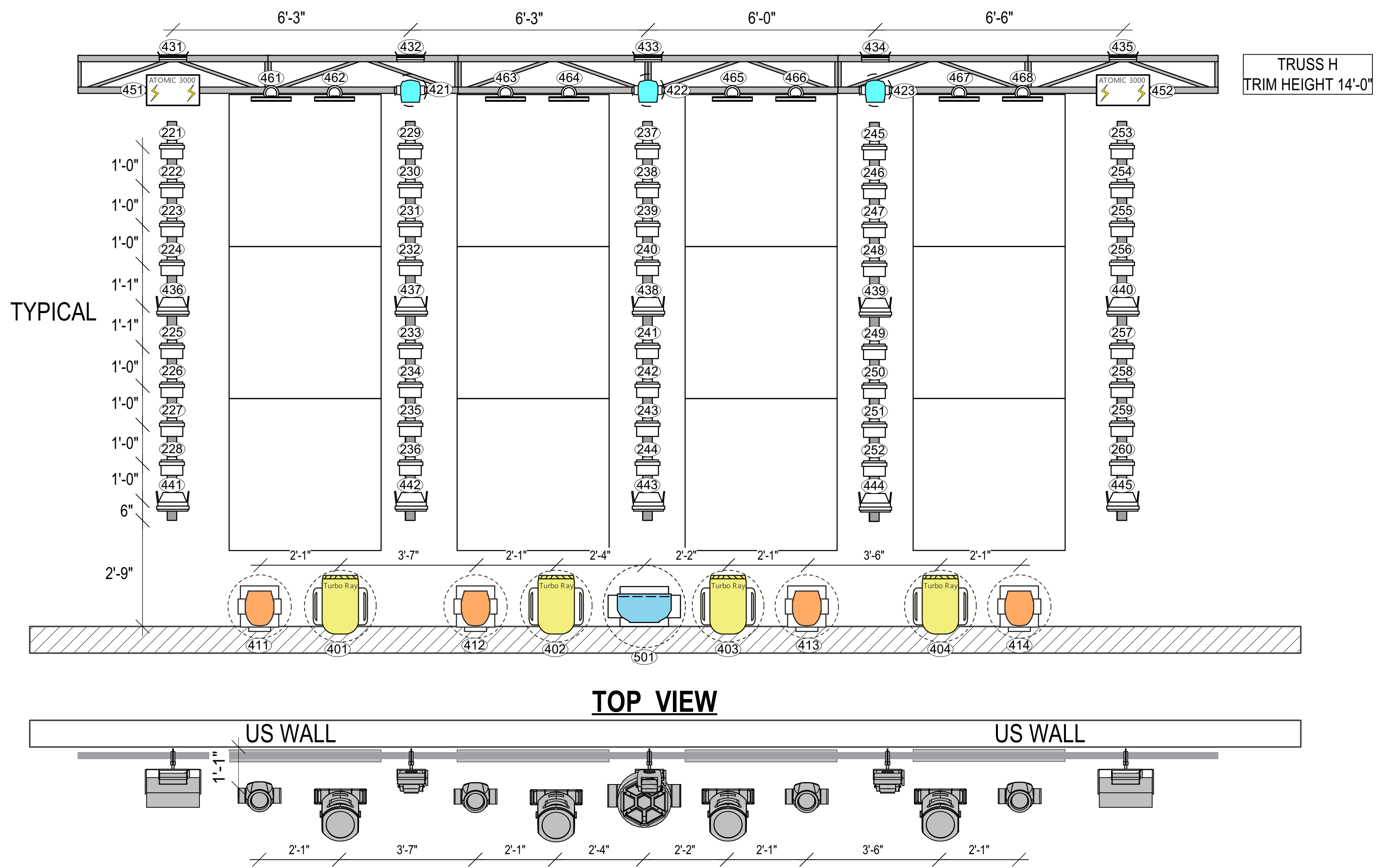


DATE: 11.11.2022  
 REVISION: 11.23.2022  
 12.04.2022  
 DRAWN BY: Jessica Winward  
 SCALE: 1/2" = 1'  
 PAPER SIZE: ARCH D

PLATE NO.

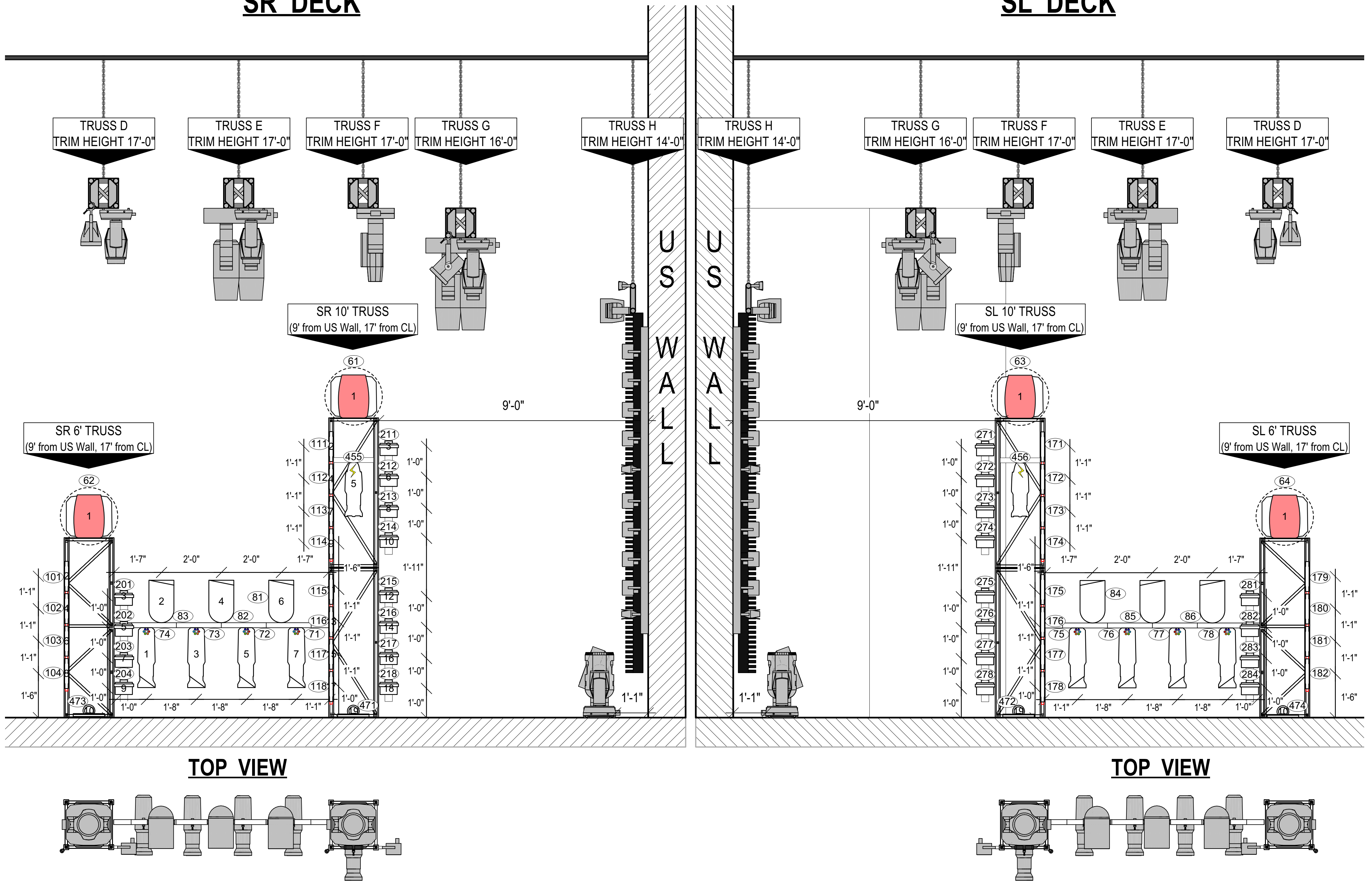
3

# US WALL



## SR DECK

## SL DECK



- Altman PAR 64 NSP (1kw)
- Altman Q-Lite (1kw)
- Altman Q-Lite Jr (650W)
- L&E Broad Cyc
- ETC Source 4 36° (750W)
- ETC Source 4 36° w/ Strobe Cap
- Wybron Forerunner 7" Scroller
- Martin Atomic 3000 DMX
- Martin Roboscan Pro 918

### INSTRUMENT KEY

- Color Kinetics Colorblast 12 Med. Lens
- Color Kinetics iColor Cove MX Powercore
- ETC D40 Lustr SELL40 Wide Round Lens
- ETC Source 4 LED 26°
- Clay Paky Sharpy
- Clay Paky Sharpy Wash 330
- High End Systems ShapeShifter C1

- Color Kinetics C-200
- Varilite VL-2500 Spot
- Varilite VL-3500 Q Spot
- Varilite VLX Wash
- GLP impression FR1
- High End TurboRay

THIS DRAWING REPRESENTS VISUAL CONCEPTS AND CONSTRUCTION SUGGESTIONS ONLY. IT DOES NOT REPLACE THE KNOWLEDGE AND ADVICE OF A LICENSED STRUCTURAL ENGINEER. THE DESIGNER IS UNQUALIFIED TO DETERMINE THE STRUCTURAL INTEGRITY OF THIS DESIGN AND DOES NOT ASSUME ANY RESPONSIBILITY FOR IMPROPER ENGINEERING OR USAGE.



### TYPICAL

- Color
- Unit #
- Channel

DATE: 11.11.2022  
 REVISION: 11.23.2022  
 12.04.2022  
 DRAWN BY: Jessica Winward

SCALE: 1/2" = 1'  
 PAPER SIZE: ARCH D

PLATE NO.  
 4



- Altman PAR 64 NSP (1kw)
- Altman Q-Lite (1kw)
- Altman Q-Lite Jr (650W)
- L&E Broad Cyc
- ETC Source 4 36° (750W)
- ETC Source 4 36° w/ Strobe Cap

- Wybron Forerunner 7" Scroller
- Martin Atomic 3000 DMX
- Martin Roboscan Pro 918
- Color Kinetics C-200
- Color Kinetics Colorblast 12 Med. Lens
- Color Kinetics iColor Cove MX Powercore
- ETC D40 Lustr SELL40 Wide Round Lens

**INSTRUMENT KEY**

- Varilite VL-2500 Spot
- ETC Source 4 LED 26°
- Clay Paky Sharpy
- Clay Paky Sharpy Wash 330

- Varilite VL-3500 Q Spot
- Varilite VLX Wash
- High End Systems ShapeShifter C1
- High End TurboRay
- GLP impression FR1

THIS DRAWING REPRESENTS VISUAL CONCEPTS AND CONSTRUCTION SUGGESTIONS ONLY. IT DOES NOT REPLACE THE KNOWLEDGE AND ADVICE OF A LICENSED STRUCTURAL ENGINEER. THE DESIGNER IS UNQUALIFIED TO DETERMINE THE STRUCTURAL INTEGRITY OF THIS DESIGN AND DOES NOT ASSUME ANY RESPONSIBILITY FOR IMPROPER ENGINEERING OR USAGE.

**SECTION**

**TYPICAL**

- Color
- Unit #
- Channel

PLOT CONCEIVED BY CONCERT LIGHTING CLASS 2022

DRAWN BY: Jessica Winward



DATE: 11.11.2022	PLATE NO.
REVISION: 11.23.2022	5
12.04.2022	
SCALE: 1/2" = 1'	OF 5
PAPER SIZE: ARCH D	