

KEY TO SYMBOLS

- ETC Source Four 19° (575W) (10)
- ETC Source Four 26° (575W) (16)
- ETC Source Four 50° (575W) (1)
- ColorSource PAR Deep Blue (9)
- SolaFrame 750 (3)
- Altman 3 Cell (1K) (10)

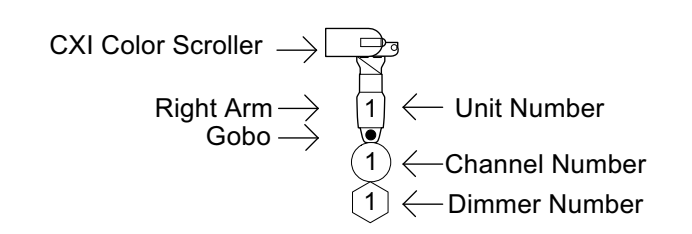
COLORS AND PATTERNS

R60	R104	R124	R125
R126	G636		

DRAWING NOTES

ALL INSTRUMENTS ARE 18" APART UNLESS SPECIFIED OTHERWISE.

LEGEND



Spring Dance Concert 2021

PROVIDENCE COLLEGE

Production Team

TECHNICAL DIRECTOR.....Trevor Elliott
 ASST. TECHNICAL DIRECTOR.....Gabriel Luxton
 DIRECTOR OF PHOTOGRAPHY ...Andrew Iacovelli
 LIGHTING DESIGNER.....Jessica Winward

APRIL 2021

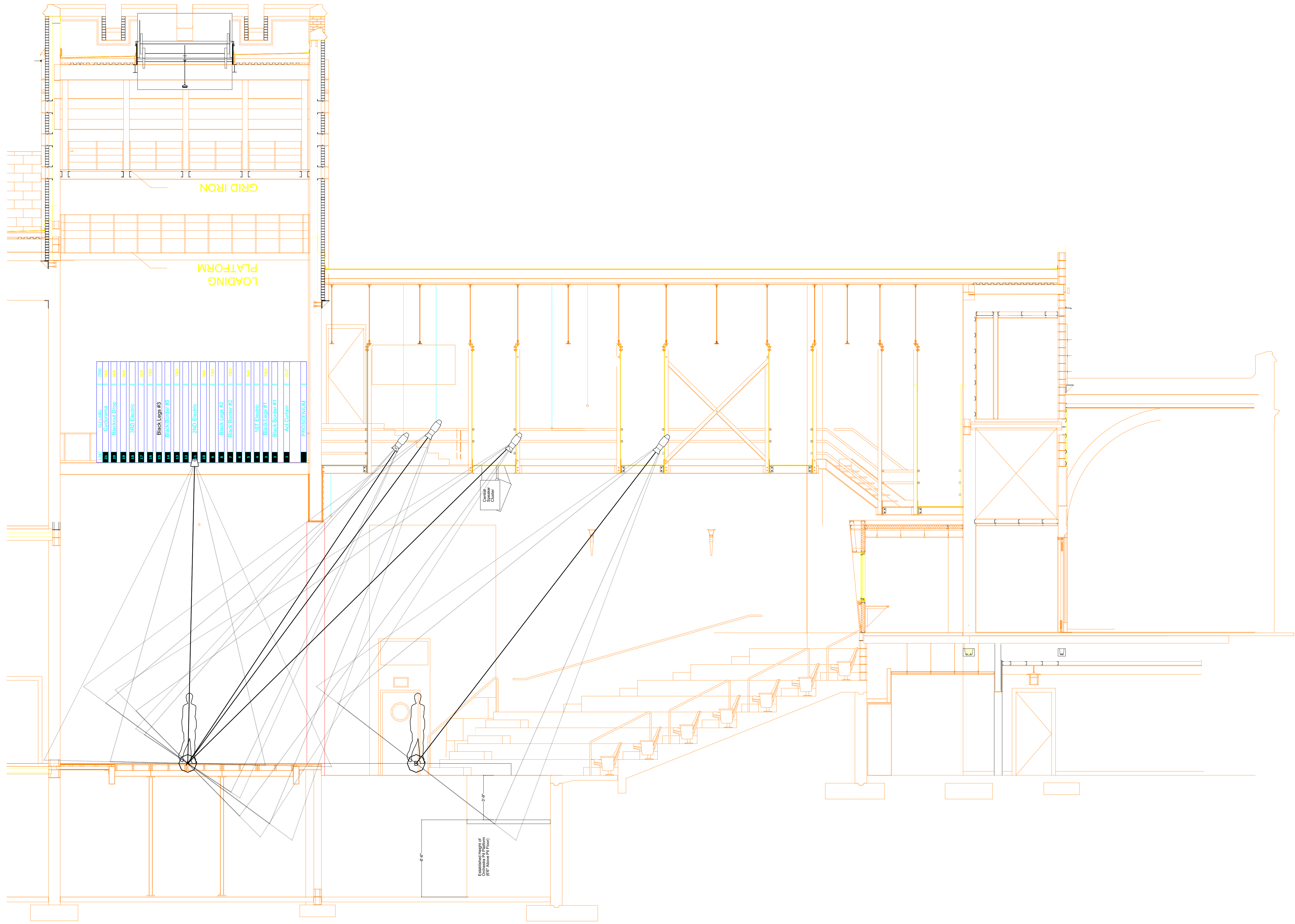
SCALE 1/4" = 1'

DWG NUMBER

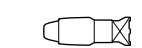
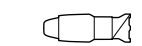
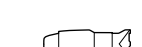

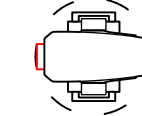

PAGE SIZE 24 X 36

L1

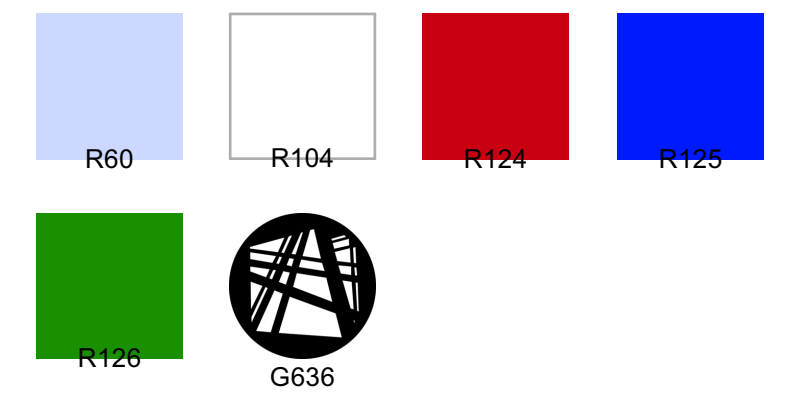
LIGHTING PLOT



KEY TO SYMBOLS

-  ETC Source Four 19° (575W) (10)
-  ETC Source Four 26° (575W) (16)
-  ETC Source Four 50° (575W) (1)
-  ColorSource PAR Deep Blue (9)
-  SolaFrame 750 (3)
-  Altman 3 Cell (1K) (10)

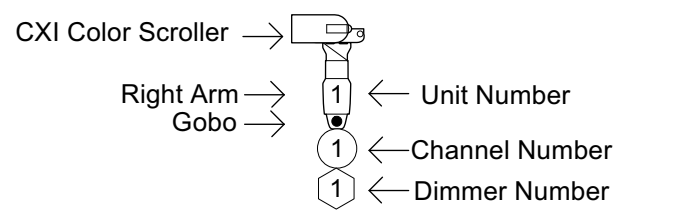
COLORS AND PATTERNS



DRAWING NOTES

ALL INSTRUMENTS ARE 18" APART UNLESS SPECIFIED OTHERWISE.

LEGEND



Spring Dance Concert 2021

PROVIDENCE COLLEGE

Production Team

TECHNICAL DIRECTOR.....Trevor Elliott
 ASST. TECHNICAL DIRECTOR.....Gabriel Luxton
 DIRECTOR OF PHOTOGRAPHY ...Andrew Iacovelli
 LIGHTING DESIGNER.....Jessica Winward

APRIL 2021

SCALE 1/4" = 1'

DWG NUMBER

PAGE SIZE 24 X 36

L2

SECTION